



Trilogy Safety and Preparedness Committee

Gas Shut off

In a gas emergency call SoCalGas at 1-800-427-2200

The following information was compiled from gas company information. Contact SoCal gas to verify your specific needs and their recommendations.

Safety Tips and Shutting off Your Gas

- Never use a flashlight, a match or candle to look for gas leaks, and never turn electric switches on or off if you suspect a gas leak.
- Do not store flammable materials such as mops, brooms, laundry and newspapers near your water heater, furnace, oven, range or any gas appliance.
- Do not store combustible materials such as paints, solvents and gasoline in the same room as your water heater, furnace, oven, range or any gas appliance.
- Stock your kitchen with a fire extinguisher.
- If a pilot light is out, shut off the gas at the appliance gas shut off valve. Wait five minutes to let gas disperse before trying to relight the appliance pilot light.
- Keep an adjustable pipe or crescent wrench or other similar tool near your main shutoff valve so you don't have to search for one in times of emergency.

When to turn off your gas

In an emergency, you can turn off your gas at the main gas service shut off valve. You can shut off your gas if you smell gas, hear gas escaping, see a broken gas line, or suspect a gas leak.

Once you have shut off your natural gas at the meter, do not try to turn it back on yourself. If the natural gas service shut off valve is closed, SoCalGas or another qualified professional should perform a safety inspection before gas service is restored, and appliance pilots are relit.

How to turn off your gas

1. Locate the main gas shutoff valve.

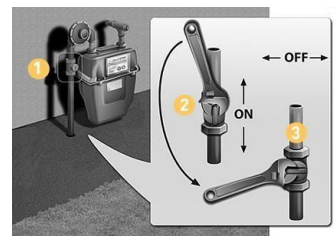
Your main gas shut off valve is normally located near your gas meter. The most common places are on the side or front of a building, a cabinet located inside a building or a cabinet meter outside a building.

2. Have a wrench handy.

Keep a 12- to 15-inch adjustable pipe or crescent-type wrench or other suitable tool near your main shutoff valve so you don't have to search for one in times of emergency.

3. Give the valve a quarter turn.

The valve is closed when the tang (the part of the valve you put the wrench on) is crosswise (perpendicular) to the pipe. If your gas service is set up differently from the one described above and contact SoCalGas at **1-800-427-2200** to get information about turning off your gas.



This information was compiled by Trilogy residents from County and Federal sources.

If you have comments or suggestions, please contact TSPC.



Trilogy Safety and Preparedness Committee

Gas and Water Shut off Tools

Below are pictures of gas and water shut-off tools. Leave them near the garage door where you can get them quickly if needed.

These tools are all about a foot long. There are also inexpensive, much smaller tools, however they don't give you much leverage and this can be an issue if the valve is hard to turn.



Gas Shut off
(smaller tool can
attached to meter)



Water Shut off



**Combination Gas
Water Shut off Tool**