



Gas and Water Shut-off

In a gas emergency call SoCalGas at 1-800-427-2200.

Safety Tips and Shutting off Your Gas

- Never use a flashlight, a match or candle to look for gas leaks, and never turn electric switches on or off if you suspect a gas leak.
- Do not store flammable materials such as mops, brooms, laundry and newspapers near your water heater, furnace, oven, range or any gas appliance.
- Do not store combustible materials such as paints, solvents and gasoline in the same room as your water heater, furnace, oven, range or any gas appliance.
- Stock your kitchen with a fire extinguisher.
- If a pilot light is out, shut off the gas at the appliance gas shutoff valve. Wait five minutes to let gas disperse before trying to relight the appliance pilot light.
- Keep an adjustable pipe or crescent wrench or other similar tool near your main shutoff valve so you don't have to search for one in times of emergency.

When to turn off your gas

In an emergency, your gas can be turned off at the main gas service shutoff valve. Do not shut off the gas unless you smell gas, hear gas escaping, see a broken gas line, or suspect a gas leak. If you shut off the gas, it may take some time for SoCalGas to turn your service back on.

How to turn off your gas

1. Locate the main gas shutoff valve.

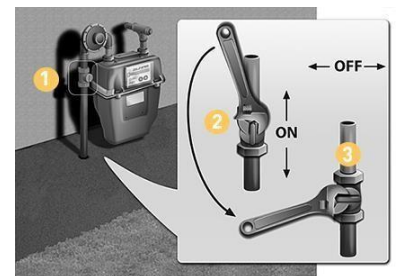
Your main gas shutoff valve is normally located near your gas meter. The most common places are on the side or front of a building, a cabinet located inside a building or a cabinet meter outside a building.

2. Have a wrench handy.

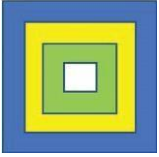
Keep a 12- to 15-inch adjustable pipe or crescent-type wrench or other suitable tool near your main shutoff valve so you don't have to search for one in times of emergency.

3. Give the valve a quarter turn.

The valve is closed when the tang (the part of the valve you put the wrench on) is crosswise (perpendicular) to the pipe. If your gas service is set up differently from the one described above and you wish to know how to turn off your gas, contact SoCalGas at **1-800-427-2200**.



NOTE: Once you have shut off the gas at the meter, do not try to turn it back on yourself. If the gas service shutoff valve is closed, PG&E or another qualified professional should perform a safety inspection before the gas service is restored and appliance pilots are relit.



Gas and Water Shut-off

Water Shut-off Inside the Home

1. The shut-off valve is normally located in the corner of the garage near the garage door.
2. Give the valve a quarter turn No tool is required. This does not turn off the fire sprinkler system in the house.



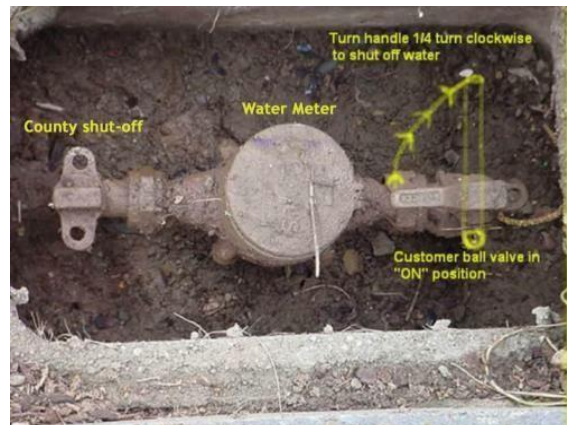
Water Shut-off for Entire Property

Locate the water meter.

The meter is located near the street under a concrete cover. You will need to remove the cover to gain access to the shutoff valve.

1. Locate the shut-off valves.

There is a shutoff valve on the house side of the meter and on the water company side of the meter. Either valve can be used to turn the water off.



2. Water company side shut-off

The valves can be very stiff and difficult to turn without the proper tool.

3. Give the valve a quarter turn.

Each valve can be closed with a quarter turn.



Gas and Water Shut-off

Gas and Water Shut-off Tools

Below are pictures of gas and water shut-off tools. Leave them near the garage door where you can get them quickly if needed.

These tools are all about a foot long. There are also inexpensive, much smaller tools, however they don't give you much leverage and this can be an issue if the valve is hard to turn.



Gas Shut-off

Water Shut-off

Combination Gas and Water Shut-off

If you will have difficulty shutting off your gas using a gas shut-off tool, you can have an automatic shut-off valve installed in your home gas line (see [Earthquake and Excess Gas Shut-off](#)). If you choose this option, be aware that this is not done through SoCalGas. Installation will need to be done on your home's gas line by a licensed installer. If the gas valve needs to be reset and you contact SoCalGas, they will charge a fee if the shut-off valve closed due to a non-earthquake occurrence.

If you will have difficulty shutting off your gas using a gas shut-off tool, you can have an Excess Flow Valve (EFV) installed that will automatically close and restrict the flow of natural gas in the event an underground pipe is damaged or there is a significant increase in the flow of natural gas to the meter. See [SoCalGas Excess Gas Flow Valve](#) for information. SoCalGas can check if an EFV is already installed and provide an estimate of the cost if one is not installed. An EFV will not protect you from household appliance malfunctions, small punctures in underground pipelines, or pipeline damage from earthquakes or flooding.

An alternative is to install a shut-off valve in your home's gas line (on your property). This requires a licensed installer. Once it is shut-off, SoCalGas can reset the valve. SoCalGas will charge a fee if the shut-off valve closed due to a non-earthquake occurrence. The link above has information about this alternative.