

Trilogy Safety and Preparedness Committee

Water Shut off

These pictures were taken from a home in Trilogy. Your water shut off valve location and shut off process may be different.

1. Locate shut off valve

The valve is normally located in the corner of the garage near the garage door.



2. Give the valve a quarter turn

No tool is required. This does not turn off the fire sprinkler system in the house.



Water Shut off for Entire Property

1. Locate the water meter.

The meter is located near the street under a concrete cover. You will need to remove the cover to gain access to the shutoff valve.

2. Locate the shut-off valves.

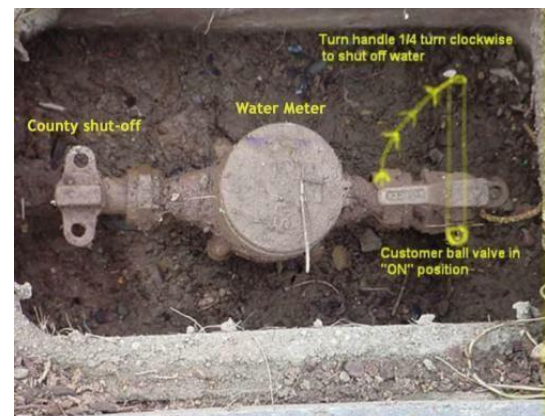
There is a shutoff valve on the house side of the meter and on the water company side of the meter. Either valve can be used to turn the water off.

3. Water company side shut off.

The valves can be very stiff and difficult to turn without the proper tool.

4. Give the valve a quarter turn.

Each valve can be closed with a quarter turn.





Trilogy Safety and Preparedness Committee

Gas and Water Shut off Tools

Below are pictures of gas and water shut-off tools. Leave them near the garage door where you can get them quickly if needed.

These tools are all about a foot long. There are also inexpensive, much smaller tools, however they don't give you much leverage and this can be an issue if the valve is hard to turn.



Gas Shut off
(smaller tool can
attached to meter)



Water Shut off



**Combination Gas
Water Shut off Tool**