



Water Shut-off

Water Shut-off Inside the Home Only

1. Locate the shut-off valve

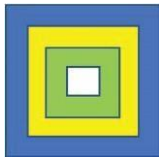
The valve is normally located in the corner of the garage near the garage door.



2. Give the valve a quarter turn

No tool is required. This does not turn off the fire sprinkler system in the house.





Water Shut-off

Water Shut-off for Entire Property

1. Locate the water meter.

The meter is located near the street under a concrete cover. You will need to remove the cover to gain access to the shutoff valve.

2. Locate the shut-off valves.

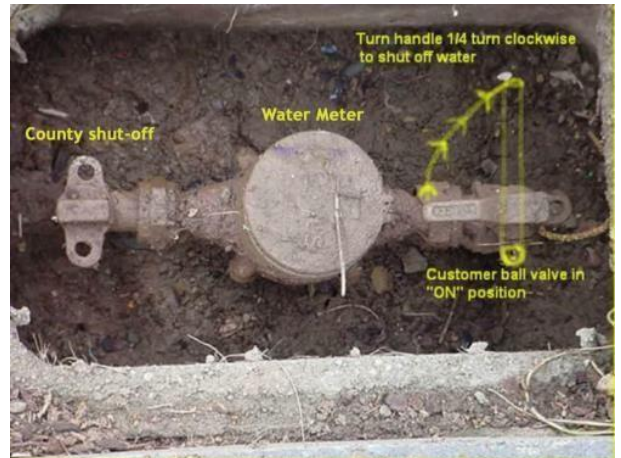
There is a shutoff valve on the house side of the meter and on the water company side of the meter. Either valve can be used to turn the water off.

3. Water company side shut-off

The valves can be very stiff and difficult to turn without the proper tool. Either of the tools show below for water shutoff will work with the water company side valve.

4. Give the valve a quarter turn.

Each valve can be closed with a quarter turn.



Gas and Water Shut-off Tools

Below are pictures of gas and water shut-off tools. Leave them near the garage door where you can get them quickly if needed.

These tools are all about a foot long. There are also inexpensive, much smaller tools, however they don't give you much leverage and this can be an issue if the valve is hard to turn.



Water Shut-off



Combination Gas and Water Shut-off